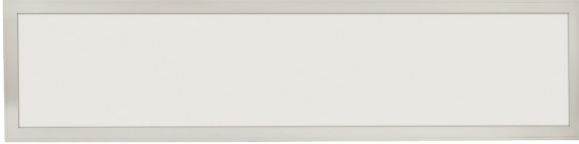


Type	
Project	
Catalog No.	

EDGE-LIT PANEL LIGHT SERIES STANDARD (1X4)



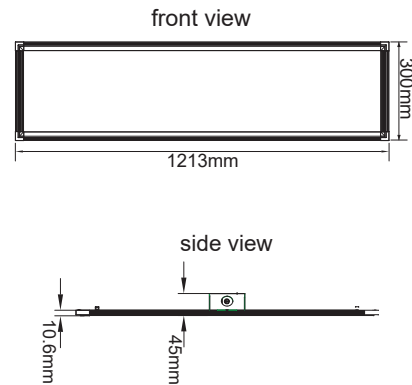
FEATURES

- Efficient, edge lit and glare free design
- 80+ CRI
- Universal input voltage
- 120° beam angle
- 0-10v Dimming: 10%-100% (Optional)
- Extruded aluminum frame with translucent diffuser
- Fits standard T-Bar
- Fixture is IC rated for contact with insulation after installation
- Ultra-thin – 1.18"
- Mounting options – surface mount (IK-FPSM-14) and suspension kits (IK-FPSK-14)
- Emergency backup Battery (Optional)




DESCRIPTION

IKIO's high performance LED edge-lit panels are excellent alternatives to traditional fluorescent troffers. The thin and lightweight edge lit design easily lays into drop ceilings. The LED and flat panel combination provides an energy efficient luminaire (up to 45% savings over traditional fluorescent) with no shadows or dark spots and meets the new higher performance DLC classification. Measuring at 1.18" in height, there is no need to worry about unforeseen obstacles in the ceiling. Available in 3000K, 3500K, 4000K, 4500K & 5000K. With a universal input of 100-277 vAC and 0-10v dimming capabilities, the fixture is ideally suited for any commercial or industrial application.

DIMENSIONS (mm)



TECHNICAL SPECIFICATION

Internal Product Code	IK-FP14-L100-XXXX-DX-XX				
Size (ft)	1 X 4				
Power Consumption (W)	40				
Lumen Output (Lm)	4000 ± 5%				
Lumen Efficacy (Lm/W)	100 ± 5%				
CCT (K)	3000 ± 5%	3500 ± 5%	4000 ± 5%	4500 ± 5%	5000 ± 5%
Color Rendering Index (CRI)	80+				
AC Input Rating (vAC)	AC 100-277v 50/60Hz				
Dimming (0-10v)	Optional				
PF	≥ 0.90				
Certifications & Warranty	  				

Not all products are qualified on the DLC QPL. To view our DLC qualified products, please consult the DLC Qualified Products List at www.designlights.org/qpl.

ORDERING INFORMATION

MODEL	LUMEN EFFICACY	POWER	DIMMABLE	CCT
IK-FP14	L100	0040 00 - 40 W	DN DN- NON DIMMABLE DY- DIMMABLE	30 30 - 3000 K 35 - 3500 K 40 - 4000 K 45 - 4500 K 50 - 5000 K

DLC LISTING AND NOMENCLATURE

MODEL	LUMEN EFFICACY	POWER	DIMMABLE	CCT
IK-FP14	L100	0040 00 - 40 W	DN DN- NON DIMMABLE DY- DIMMABLE	30 30 - 3000 K 35 - 3500 K 40 - 4000 K 45 - 4500 K 50 - 5000 K

40W- Non Dimmable

DLC PRODUCT CODE

IK-FP14-L100-0040-DN-30A
IK-FP14-L100-0040-DN-35A
IK-FP14-L100-0040-DN-40A
IK-FP14-L100-0040-DN-45A
IK-FP14-L100-0040-DN-50A

DLC PRODUCT ID

PRBXJ5ZL
PNJOD19X
PP7SWVEE
PBWKM7B
P1LAEHMP

40W- Dimmable

DLC PRODUCT CODE

IK-FP14-L100-0040-DY-30A
IK-FP14-L100-0040-DY-35A
IK-FP14-L100-0040-DY-40A
IK-FP14-L100-0040-DY-45A
IK-FP14-L100-0040-DY-50A

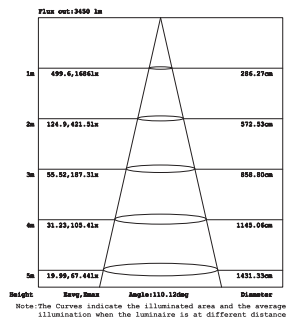
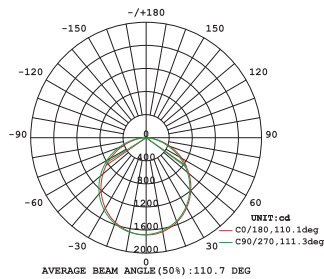
DLC PRODUCT ID

PRNUCMV5
PD8NFLPM
P8H8BUZS
PBQ5R27R
PND6L0UL

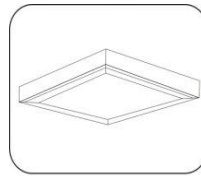
OPTOMETRIC DATA

IK-FP14-L100-XXXX-XX

LUMINOUS INTENSITY DISTRIBUTION DIAGRAM

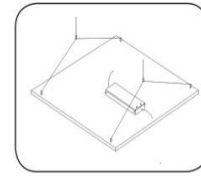


ACCESSORIES



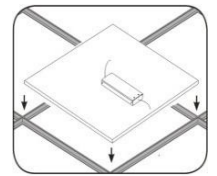
Surface mount kit

IK-FPSM-14



Suspension Kit

IK-FPSK-14



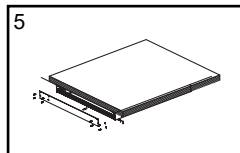
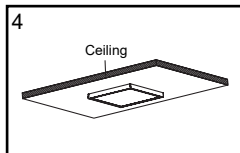
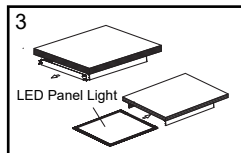
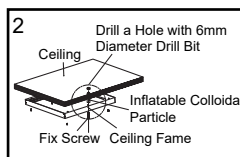
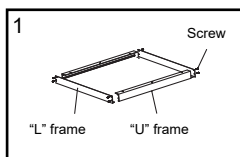
K- Clips

IK-FPKC-14

INSTALL INSTRUCTIONS

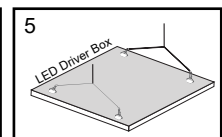
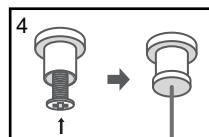
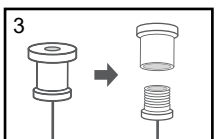
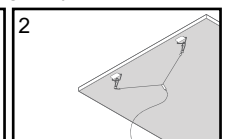
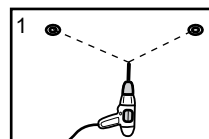
Surface Mounted


1. Assemble the frame well.
2. Fix the frame on ceiling.
3. Take out one "L" bracket from the frame.
4. Insert LED panel to the frame.
5. Fix "L" bracket to the frame.



Suspended

1. According to the width of the panel light, drill 2 mounting holes on the mounting position.
2. Button the panel light with the dog buckle of the equipped rope.
3. Twist off the rope grab device, and divide it into two parts: the upper cover and lower cover.
4. Fix the upper cover into prepared mounting holes with self-tapping screws (not included), and then twist on the lower cover.
5. Connect LED panel light by the hook of suspension wire.



 Please make sure the frame is assembled well before fixed on ceiling